

ACKNOWLEDGEMENTS

We are thankful to Dr P. Stary, Institute of Entomology, Czechoslovak Academy of Scien-

ces, Czechoslovakia for verifying the identities of aphidiid species and to the Head, Dept. of Zoology, University of Kalyani for laboratory facilities.

REFERENCES

- DAS, B.C. & CHAKRABARTI, S. (1986): Mating and oviposition of *Kashmiria aphidis* (Aphidiidae: Hymenoptera). Proc. 2nd Nat. Symp. Recent Trends in Aphidological Studies Modinagar (Editor S.P. Kurl): 103-117.
- DAS, B.C. & CHAKRABARTI, S. (1988a): Immature stages of *Kashmiria aphidis* (Hymenoptera, Aphidiidae). *Acta Entomol. Bohemoslov.* 85: 16-20.
- DAS, B.C. & CHAKRABARTI, S. (1988b): Sex ratio of *Kashmiria aphidis* Stary and Bhagat (Hymenoptera: Aphidiidae) in the field. *Ann. Entomol.* 6: 63-66.
- DAS, B.C. & CHAKRABARTI, S. (1988c): Seasonal occurrence of *Aphidius matricariae* Haliday (Aphidiidae: Hymenoptera) in Garhwal range of north west Himalaya. *Indian J. Ent.* 50: 388-389.
- DAS, B.C. & CHAKRABARTI, S. (1989a): Aphidiid parasitoids (Hymenoptera: Aphidiidae) of graminaceous aphids in Garhwal, western Himalaya. *Orient. Insects.* 23: 365-372.
- DAS, B.C. & CHAKRABARTI, S. (1989b): Two new aphid parasitoids (Hymenoptera: Aphidiidae) from Garhwal range of western Himalaya, India. *Entomon* 14: 339-343.
- DAS, B.C. & CHAKRABARTI, S. (1989c): *Praon himalayensis*, a new walnut aphid parasitoid (Hymenoptera: Aphidiidae) in Garhwal range of western Himalayas. *Entomon* 14: 345-347.
- DAS, B.C. & CHAKRABARTI, S. (1990): New and little known aphidiid parasitoids (Hymenoptera: Aphidiidae) of gall forming aphids in western Himalaya, with notes on their seasonal history. *Orient. Insects* 24: 399-414.
- HALIDAY, A.D. (1834): Essay on the classification of parasitic hymenoptera of Britain, which correspond with the *Ichneumonones minuti* of Linn. *Ent. Mag.* 2: 93-106.
- SAHA, S. & CHAKRABARTI, S. (1987): New records of aphids (Homoptera: Aphididae) from Garhwal range of western Himalaya, India. *J. Bombay nat. Hist. Soc.* 85: 633-635.

A NEW SPECIES OF WHITEFLY *DIALEUROPORA HEPTAPORA* SP. NOV.
(ALEYRODIDAE : HOMOPTERA) FROM INDIA¹

K. REGU AND B.V. DAVID²
(With a text-figure)

During the course of field collection of whiteflies, a species of *Dialeuropora* collected from *Hiptage* sp. in Ambalamedu, Kerala, on 4 December 1989 was found to be new to science and is described here.

Dialeuropora heptapora sp. nov. (Fig. 1)

Pupal case: White, oval, thin, found on the lower surface of leaves, 1.08-1.13 mm long and 0.80-0.85 mm wide.

Margin: Crenulate, 16-17 crenulations in 0.1 mm; thoracic and caudal tracheal pores present; anterior marginal setae 20 μ long and posterior marginal setae 25 μ long.

Dorsal surface: Four pairs of dorsal setae – cephalic setae 5-7.5 μ long, first abdominal setae 5-12.5 μ long, eighth abdominal setae 5-7.5 μ long and submarginal caudal setae 7.5 μ long. A row of seven pairs of large pores and porettes (4 on cephalothorax and 3 on abdomen on submargin near the margin present. A row of five pairs of submarginal setae (4 on cephalothorax and one on abdomen) each 7.5 μ long. Longitudinal moulting suture reaches the margin, whereas transverse moulting suture reaches subdorsum. A pair of thick round markings submedially on each segment present. Numerous thin round markings sparsely distributed throughout the dorsum. Submargin and subdorsum covered with numerous microtubercles.

Vasiform orifice subcircular, wider than

¹Accepted February 1991

²Fredrick Institute of Plant Protection and Toxicology, Padappai, Tamil Nadu 601 301

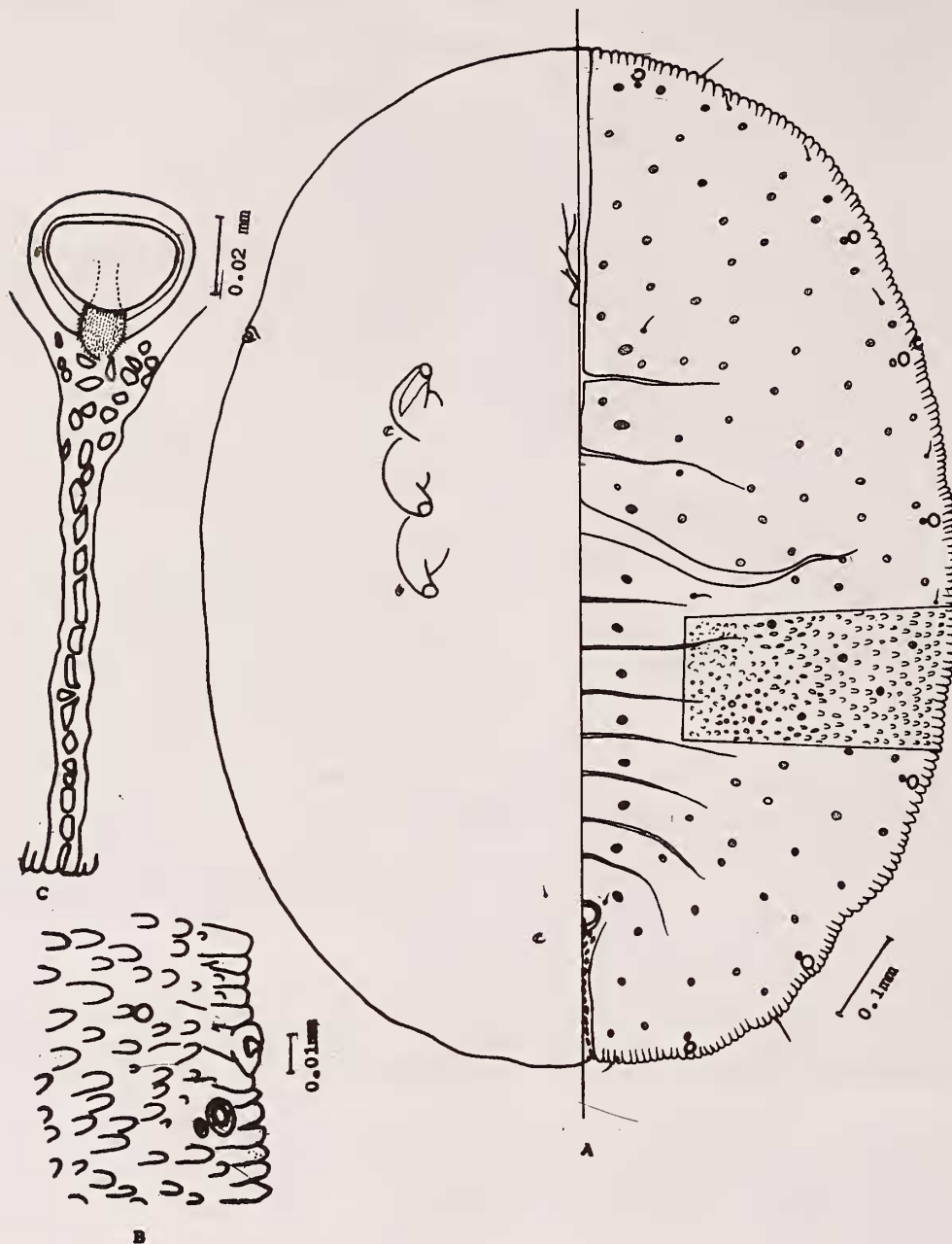


Fig. 1. *Dialeuropora heptapora* sp. nov.

long, 35-42.5 μ wide and 32.5-37.5 μ long; operculum similarly shaped, 27.5-32.5 μ wide and 17.5-22.5 μ long; lingula tip setose and exposed. Caudal furrow very long, 135-150 μ long and 7.5 μ wide. Polygonal markings evident on the caudal furrow and thoracic tracheal furrows indistinct.

Ventral surface: Paired ventral abdominal setae 7.5-17.5 μ long and 40-42.5 μ apart. Antenna reaches near the base of the prothoracic leg.

Host: *Hiptage* sp. (Malpighiaceae).

Material examined: Holotype. *Hiptage* sp., Am-balamedu (Kerala), 14 December 1989, Coll. K. Regu.

Paratypes: Six pupal cases on slides bearing the same details as of holotype.

This species resembles *Dialeuropora decempuncta* (Quaintance & Baker) in the shape of vasiform orifice and the exposed lingula tip but it differs from that in the presence of seven pairs of submarginal pores and porettes, five pairs of sub-marginal setae, caudal tracheal furrow with polygonal markings and submargin and subdorsum with numerous microtubercles.

ACKNOWLEDGEMENTS

Thanks are due to Mr S. James Fredrick, Chairman, FIPPAT for facilities provided and to Dr C. Livingston, Professor of Botany, Madras Christian College, Madras for identifying the host plant.